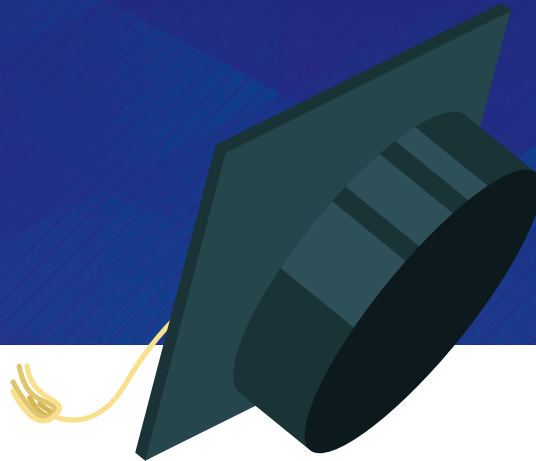




in partnership with
**University of
Sunderland**



MBA

PROSPECTUS 2023 / 24



www.ismt.edu.np



ABOUT ISMT

ISMT was established in 2011 with a mission to deliver internationally recognized qualifications. ISMT offers a range of qualifications in collaboration with the University of Sunderland, UK. ISMT exists to make an impact in the education system in Nepal, with an ambition to deliver industry-relevant education and make higher education accessible and beneficial to all those with the passion and ability to succeed.

ISMT is committed to the delivery of inclusive, cost-effective, and internationally recognized academic programmes in the context of core local requirements and values. Our goal is to reach more students with high-quality, life-changing learning that meets their needs and enriches society. At ISMT, students will gain an internationally recognized UK degree that will open doors to an outstanding future.

Our aim is not just to impart learning but to ensure that students can apply their knowledge and understanding, and problem-solving abilities in actual work environments within broader contexts related to their field of study. ISMT engages students, individually and collectively, in the quality of their educational experiences through a range of project works, classroom discussions, presentations, and different modes of assessments. The curricular and extra-curricular activities help students to develop a range of sector-related technical, interpersonal, managerial, and leadership skills.

If you have big dreams, want to enhance your career in this highly competitive world, are highly driven and want to reach beyond expectations, then ISMT provides you with the environment which enables you to achieve your goals in life. Do not take these words for granted; you are cordially invited to explore ISMT's academic programmes and its enriching learning environment and to discuss your needs with its dedicated team.



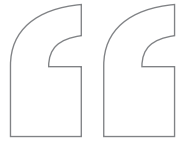
VISION

A globally respected academic institute that endorses noble professional practices in Nepal and in South Asia by creating new frontiers and developing "ethical", dependable, entrepreneurial and socially sensitive leader-managers, educators and IT professionals committed to producing excellent results.



MISSION

To create a sustainable education base through the pursuit of learning and developing professionalism that will create a competitive edge to perform at a Global Level.



Message from **VICE-CHANCELLOR**

INTERNATIONAL SCHOOL OF MANAGEMENT AND TECHNOLOGY (ISMT) AND UNIVERSITY OF SUNDERLAND PARTNERSHIP

The University of Sunderland is a British university with a global footprint. We have campuses in Sunderland in the north-east of England, London and Hong Kong. In addition, we have excellent transnational partnerships with institutions in over a dozen countries across the world.

I am delighted that the International School of Management and Technology (ISMT) has become our partner. Like the University of Sunderland, ISMT has an excellent reputation and we see great benefits for students in this new arrangement.

The University of Sunderland was recently shortlisted as United Kingdom University of the Year, something that speaks to the range and quality of our work. That will now be available to ISMT students in a number of places across Nepal. So, we look forward to welcoming those who will study for our degrees in

subjects as diverse as computer systems engineering, business management, and tourism and hospitality.

The ties of friendship between the UK and Nepal run long and deep. It is that spirit that will, undoubtedly, make the relationship between the University of Sunderland and ISMT a great success, now and in the future.



David Bell

SIR DAVID BELL KCB DL
Vice-Chancellor and Chief Executive
University of Sunderland



Academic Partnership



**University of
Sunderland**

Founded in 1901 as Sunderland Technical College, the University of Sunderland gained university status in 1992. The University of Sunderland is a highly-respected UK university that combines academic excellence with fantastic student support and pastoral care. As you would expect from a university that has been providing education since 1901, The University offers a rich and high-quality education and facilities.

The university has five main faculties for its students: arts, and creative industries, business, law and tourism, education and society, health sciences and wellbeing, and technology. The University is recognized as world-leading in several areas of and research and teaching, including Computing and IT, Business Management, Hospitality Management, pharmacy, engineering, sports and exercise sciences, education and social work.

Sunderland has been an important nucleus for education since 674 AD, when Benedict Biscop built St. Peter's Church and Monastery, which was also the first place to get stained glass windows in the UK. The Sir Tom Cowie Campus is located next to this famous church.

Now a mixture of Georgian, Edwardian and Victorian architecture, Sunderland is one of the largest cities in the north east and has a buzzing nightlife scene, often playing host to many touring music bands. It is a short walk from miles of sandy beaches and about three and a half hours by train from London.

The University of Sunderland in London, located at the heart of the UK's most important financial centre, is used for teaching business, tourism and nursing degrees.



**FIVE STAR RATING IN TEACHING,
EMPLOYABILITY, INTERNATIONALISATION,
INCLUSIVENESS AND FACILITIES**

According to QS Stars World University Ranking 2019

MBA Master of Business Administration



The MBA is a two-year programme. This prepares you for the development of a career in business and management by developing industry-relevant knowledge and skills at a professional level.

Studying an MBA from ISMT broadens your knowledge and understanding of organisations, the external context in which they operate and how they are managed. The programme will help you develop intellectual breadth and be able to make integrative links across the various areas of organisations. Our aim is not just to impart learning but to actively work with you on how you can improve your overall skills. The curricular and extra-curricular activities will help you to develop a range of important leadership and management skills.

WHY MBA AT ISMT

1. The MBA remains ISMT's flag ship programme delivered in partnership with the University of Sunderland UK. The programme is designed with an aim of transforming your caliber into leading managers in your chosen sectors.
 2. You'll gain a prestigious qualification that will greatly enhance your career prospects, and gain a qualification respected by employers worldwide.
 3. The MBA programme is designed to help you develop the skills and knowledge you need in your career.
 4. You will gain employability skills and discover your strengths and values, and how to use them in the search for a fulfilling and rewarding career.
- This ensures the MBA ISMT delivers is industry-focused and MBA graduates leave with both the academic qualifications and life skills that help them climb the career ladder faster.

YEAR 1

TRIMESTER 1
<ul style="list-style-type: none"> • Financial Management And Control • Strategic Management In An International Context
TRIMESTER 2
<ul style="list-style-type: none"> • Professional Management And Leadership Development
TRIMESTER 3
<ul style="list-style-type: none"> • Value Creation In Organizations - Managing Operations And Marketing

YEAR 2

TRIMESTER 1
<ul style="list-style-type: none"> • Innovation, Entrepreneurship And Technology Transfer
TRIMESTER 2
<ul style="list-style-type: none"> • MBA Research Project
TRIMESTER 3
<ul style="list-style-type: none"> • MBA Research Project

Option modules available on this programme are as below – please note that there may be instances where not all options will be available.

Career Prospects

MBA is for someone who is looking to accelerate his/her career, switch industries, or work for a top salary. MBA graduates occupy top positions in companies across range of industries.

- Banker
- Financial advisor
- Finance Manager
- Marketing Manager
- HR Manager
- Business consultant
- Project Manager
- Business Operation Manager and many more

ismt™ Campuses



Kathmandu Campus

ISMt Kathmandu is located in the heart of Kathmandu Valley at Tinkune, Gairigaun. **ISMt** is accessible from every corner of the valley i.e. Kathmandu, Lalitpur and Bhaktapur.

T 01 - 4112122, 4112159

E info@ismt.edu.np



Pokhara Campus

ISMt Pokhara is located at Annapurna Marg, Pokhara-15 near the Forestry Campus.

T 061 - 433826, 435436

E pokhara@ismt.edu.np





Chitwan Campus

ISMT Chitwan is situated at Bharatpur-12, Near the Naurangi Chowk. The college is located about 300 meter east from Dhanagada Temple.

T 056 - 515146, 515246

E chitwan@ismt.edu.np

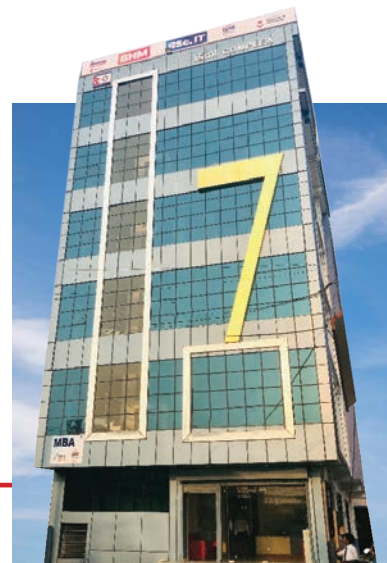


Butwal Campus

ISMT Butwal is situated at Tilottama -2, Janaki Nagar, Yogikuti, Rupandehi

T 071 - 437238

E butwal@ismt.edu.np



Biratnagar Campus

ISMT Biratnagar is situated at Biratnagar-5, Kanchanbari. The college is located just behind Oil Nigam.

T 021 - 420141, 420231

E biratnagar@ismt.edu.np



in partnership with
**University of
Sunderland**



KATHMANDU CAMPUS

Tinkune, Gairigaun,
Kathmandu

☎ 01 - 4112122, 59
✉ info@ismt.edu.np
📞 9801060600



CHITWAN CAMPUS

Bharatpur-12,
Chitwan, Nepal

☎ 056 - 521164, 515146
✉ chitwan@ismt.edu.np
📞 9801183801



POKHARA CAMPUS

Pokhara-15,
Annapurna Marg, Nepal

☎ 061 - 433826, 435436
✉ pokhara@ismt.edu.np
📞 9801183805



BIRATNAGAR CAMPUS

Biratnagar-5,
Kanchanbari, Nepal

☎ 021 - 420141, 231
✉ biratnagar@ismt.edu.np
📞 9801183802



BUTWAL CAMPUS

Janakinagar,
Butwal, Nepal

☎ 071 - 437238
✉ butwal@ismt.edu.np
📞 9801183808



www.ismt.edu.np

